

Domestic Products > ClearFox® QuickOne SBR

What is the ClearFox® QuickOne SBR?

A low energy single chamber SBR system that can be used to treat sewage from domestic applications from 5-50 persons.

How does it work?

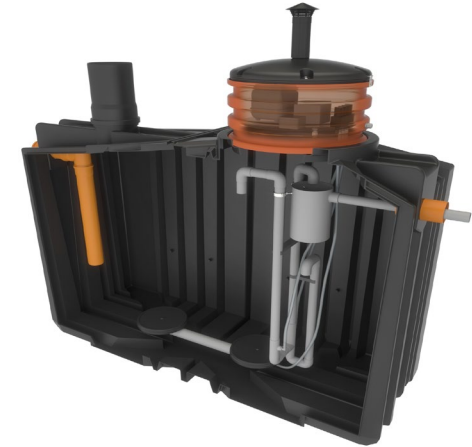
The QuickOne uses a unique SBR sequential aeration process to treat sewage to a level many times lower than the regulatory standards.

What is special about the QuickOne SBR?

Low running costs – HDPE tank with stainless steel reinforcement – Certified to EN12566-3 – up to 17 systems can be transported in one 40ft container.

What are its applications?

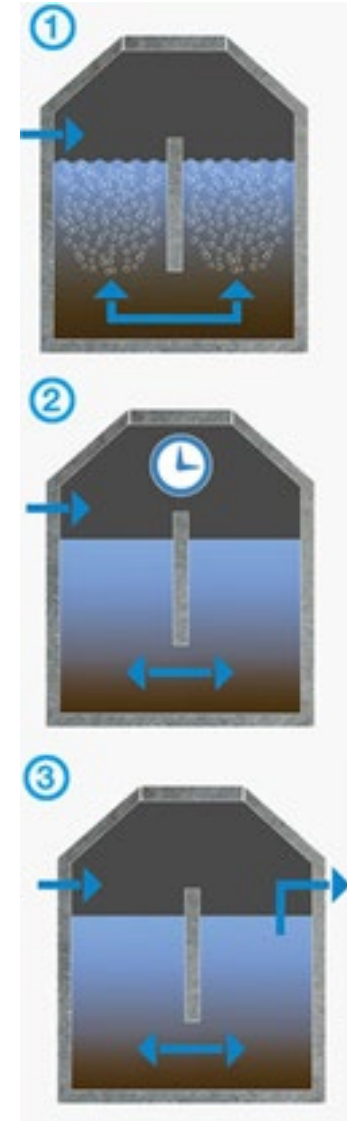
Sewage treatment for new houses or as a septic tank replacement for an existing household.



Domestic Products > ClearFox® QuickOne SBR

Technical Information

- 6mg/l BOD, 17mg/l SS, 0.2mg/l NH₄N, 48mg/l COD effluent standard.
- 0.52kwh/day power consumption [based on 5 persons].
- HDPE tanks with stainless steel reinforcement – shallow dig tanks with a flat base.
- Sludge stabilisation produces low sludge volumes – offering extended desludging intervals.
- An odourless Sewage treatment system.
- Completely automatic operation with minimal maintenance.
- A robust and reliable EN12566-3 approved system.



SBR Steps:

1 - Aerate

2 – Settle

3 – Discharge